

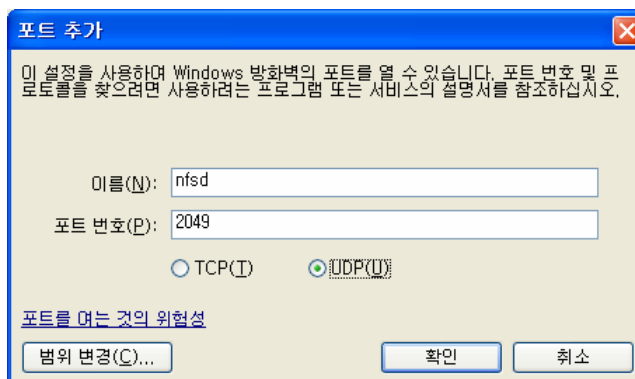
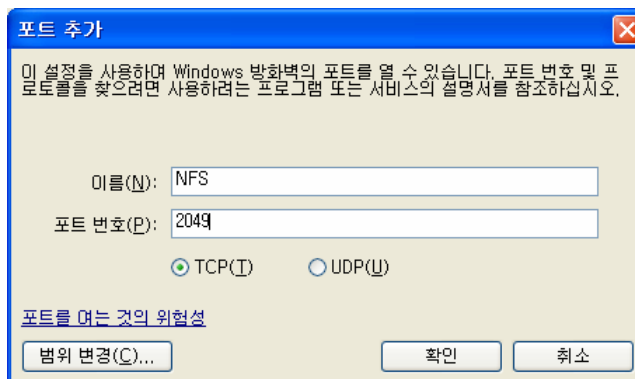
< nfs server install on the cygwin >

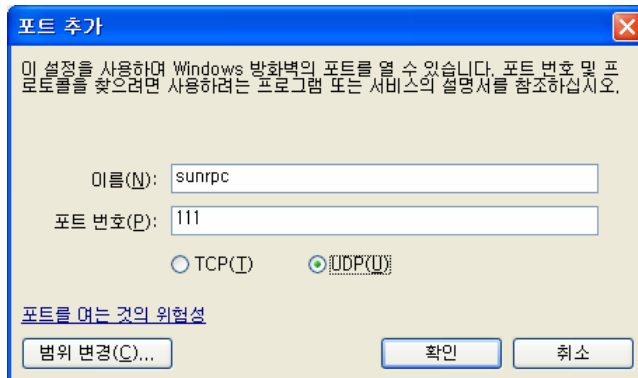
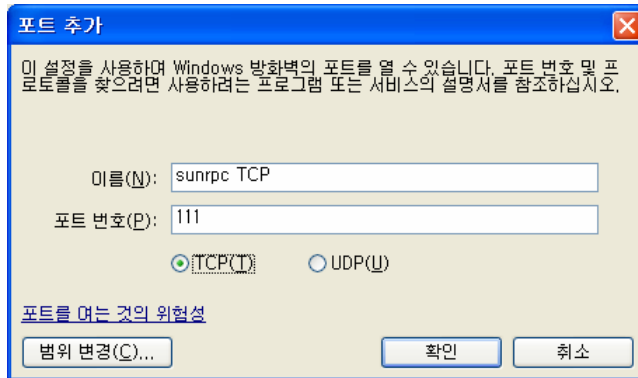
1. cygwin(1.5.19-4) install (the following packages are needed surely)
 - nfs-server, tcp_wrappers (Net category)
 - sunrpc (Libs category)
 - cygrunsrv (Admin category)
2. Configuring the server
 - A. Run the configuration script
 - In the cygwin shell window, run
/usr/bin/nfs-server-config
 - yes → yes → user name(windows logon ID) → password → yes → yes
 - B. Editing Host access control files
 - “/etc/hosts.allow” file open
 - add the following contents
nfsd: [ip address to enable access]
ex) nfsd: 210.102.3.96 ← To enable access by just one host
ex) nfsd: 210.102.0.0/255.255.0.0 ← To enable an entire subnet
 - C. Export directory (setting nfs share directory, setting ip address range possible to access, read/write authorization)
 - “/etc/exports” file open
 - add the following contents
/[share directory] [ip address range](r/w authorization)
→ ex) /home 210.102.3.0/255.255.255.0(rw, no_root_squash)
3. Starting the server
 - A. On the Windows
 - 시작/실행 클릭: services.msc
 - “Cygwin mountd”, “Cygwin nfsd”, “Cygwin portmap” service start
 - B. Or On the cygwin shell
 - cygrunsrv --start mountd
 - cygrunsrv --start nfsd
 - cygrunsrv --start portmap

※ To bypass the firewall of Windows XP(Service Pack 2)

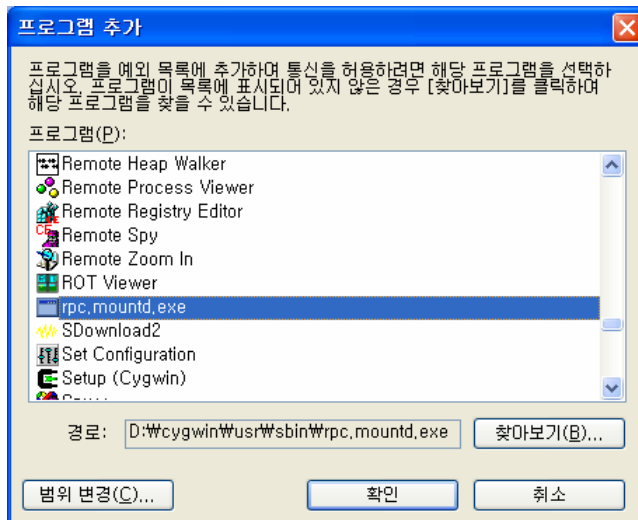


→ “포트 추가” 클릭





→ “프로그램 추가” 클릭



< Board Setting >

1. IP Set

```
# ifconfig eth0 210.102.3.96 netmask 255.255.255.128  
# route add default gw 210.102.3.10
```

2. nfs server access

```
# portmap &  
# mount -t nfs 210.102.3.97:/home /mnt/nfs_share/
```